



Pathway Graduate Certificate (PGC)

to

The University of Newcastle Postgraduate Courses



❖ *About SCSB*

❖ *SCSB - UON Pathways*

❖ *Our mission*

❖ *Course Overview*

❖ *Entry Requirement*

❖ *Career Opportunity*

❖ *Fee and Charges*

❖ *Why Choose SCSB*

❖ *Staff and Management*

❖ *Student Welfare and Support*

❖ *Our Campuses*

WHO WE ARE

About SCSB

Southern Cross School of Business (SCSB) is an Australian government accredited vocational education institution specialising in Business, Accounting and Management with University Pathway programs for Australian and International students.

SCSB was established to provide students with the option of an institute that would deliver quality workplace focused training at affordable fees. The School management in all areas and campuses comprise of experienced academics and professionals who are great believers in the transformative power of vocational and higher education.

SCSB offers accredited training to people who are part of current workforce in different capacities and to school leavers through a range of VET and university pathway courses. SCSB VET, ELICOS and university pathway courses are specifically designed to support learners to pathway into higher education courses leading to further study and/or career enhancement.

SCSB courses engage students in real creative industry projects, helping the learners to develop essential skills while exploring current industry relevant topics.

Studying a full-time or part-time Diploma or Advanced Diploma of Accounting, Leadership and Management or Business at SCSB will set you up for a great start to your career and life-long learning.

SCSB - University Pathway Programs



In the 2014 QS top 50 rankings survey, University of Newcastle (UON) was rated Australia's 'number one' university. UON is also ranked in the world's top 20 universities under 50 years of age after rising 12 positions to be ranked at number 19.



The University of Newcastle Vice Chancellor, Professor Caroline McMullen said the ranking reflected the University's international reputation for delivering the highest quality education and conducting world-class research and education

SCSB Pathway Graduate Certificate, Diploma or Advanced Diploma of Business (university pathway) are broad-based university foundation courses designed after comprehensive research and benchmarking against undergraduate and postgraduate degree programs offered at universities and higher education institutions.

Successful completion of SCSB Pathway Graduate Certificate and/or undergraduate university pathway courses will provide students with either a pathway to the University of Newcastle (UON) undergraduate degrees, to Australian Institute of Higher Education (AIH) or to start their career in a broad range of opportunities in business, management, marketing, market research or information management.

Graduates of SCSB's Pathway Graduate Certificate, University Pathway Diploma or Advanced Diploma of Business will enter into select majors of their choice in Bachelor of Business or in select Postgraduate courses (depending upon achieved pathway qualification) at the University of Newcastle or Australian Institute of Higher Education (AIH)

PATHWAY GRADUATE CERTIFICATE (PGC)

COURSE OVERVIEW

The Pathway Graduate Certificate (PGC) is a non-award program designed to provide a quality pathway to the University of Newcastle select postgraduate programs. The PGC prepares International students for postgraduate study in business, accounting, management and information technology. It assists students to develop the skills necessary for success at the postgraduate level.

Combining English language training and academic studies, the PGC is designed for students whose academic qualifications and/or English proficiency levels are marginally below the entry requirements for postgraduate programs at the University of Newcastle.

The PGC has a strong focus on the English language, research methods and communication skills required for postgraduate study in Australia institutions.

ENTRY REQUIREMENTS

Academic

The students wishing to enter PGC would need to have completed one of the following qualifications post Senior High School Certificate (or equivalent):

- A bachelor degree - preferably in a field that is related to field of further study, or
- A three-year approved tertiary diploma three-year qualification.

English Language

Where English is not the candidate's first language, the minimum English requirement to enter PGC is IELTS 5.5 with no band below 5.0. Students who have an overall IELTS score of less than 5.5, will be required to undertake additional English language study.

SCSB offers a variety of English language courses. These courses are designed to improve students' English language literacy and prepare them to study at tertiary education levels.

Our Mission

To empower indigenous, domestic and international clients, through innovative programs and pathways into higher education, professional employment, entrepreneurship and global citizenship.

Course Delivery

SCSB Courses are delivered face to face and in blended learning mode. The teaching weeks for different courses may vary in contact and content. Once enrolled, the students will be provided with an individual timetable and a complete Course Planner.

At SCSB, we provide students with the state-of-the art learning facilities including access to computer labs, most up-to-date training materials and access to online business environments.

Generally, the teaching nominal hours are partitioned into the following segments:

- » Teaching / class hours;
- » Supervised study hours;
- » Assessment help hours.

Students need to allocate between 10 to 15 hours of self-study time per week per unit to enhance their understanding. A maximum of 15 hours of self-study should be sufficient for an average student to complete the required tasks.

PATHWAY GRADUATE CERTIFICATE (PGC)



"In response to those who say to stop dreaming and face reality, I say keep dreaming and make reality."

- Kristian Kan

COURSE OPPORTUNITY

This course is a pathway to select postgraduate degrees at the University of Newcastle.

The students who successfully complete the Pathway Graduate Certificate (PGC) will meet the Academic and English language requirements for entry into the University of Newcastle Master of Business Administration (MBA), Master of Professional Accounting (MPA), Master of International Business (MIB) or the Master of Information Technology (MIT).

FEE AND CHARGES

International tuition fees for the Pathway Graduate Certificate are charged on a per subject basis. PGC tuition fees will be set annually and enrolled students will be invoiced at the prevailing rate.

LOCATION

Southern Cross School of Business delivers the Pathway Graduate Certificate is offered in China and other overseas locations. The postgraduate programs that students will undertake after successful completion of PGC are delivered at the University of Newcastle main campus in Newcastle, Sydney City Campus and select other locations.



Southern Cross School of Business is committed to completing the outlined training and assessment once students have commenced their study, and to meeting all of its responsibilities towards its students.

DURATION

The standard duration of PGC is one year. The students will undertake study in the following components of PGC:

Part I: Academic English

- a. Term 1: Academic English I (10 weeks)
- b. Term 2: Academic English II (10 weeks)

Part II: Graduate Pathway Study

- c. Term 3: 2 PGC Subjects
- d. Term 4: 2 PGC Subjects



ENTRY INTO THE UNIVERSITY OF NEWCASTLE POSTGRADUATE PROGRAMS

Upon successful completion of PGC and having met other admission criteria, the students will enter in one of the following programs with applicable credits (based on individual admission application assessment):

- Master of Professional Accounting (MPA)
- Master of International Business (MIB)
- Master of Business Administration (MBA)

PATHWAY GRADUATE CERTIFICATE SUBJECTS

➤ MPA, MIB, MBA Stream

Contemporary Management and Leadership

Accounting and Financial Management

Principles of Business Analysis

Organisational Behaviour



WHY CHOOSE SCSB

Staff and Management

SCSB staff and management have exceptional experience in international education including management of major projects in Malaysia, Indonesia, South America, China and the United States.

SCSB employs suitably qualified, knowledgeable, highly experienced professionals with a proven track record of hands-on teaching, student counseling, and people management.

SCSB's teams of academics and advisors have vast experience in dealing with complex student requirements in learning and welfare. Our academics are suitably qualified, have relevant industry experience people focus that facilitates learning with ease for people of all ages in complex and simple areas of study.

Student Support, Welfare and Guidance

Where the student is experiencing any personal difficulties, they will be referred to relevant staff who will provide best possible available assistance. If the student's needs exceed the school's support capacity it will refer the student to an appropriate external agency.



“The mind is not a vessel to be filled, but a fire to be kindled”
- Plutarch

Why Choose SCSB

SCSB courses are specifically designed to support learners to pathway into University Degrees.

All our courses are designed to reflect roles and tasks in current industry contexts. Courses are practical and project based, comprising both individual and group work, and using professional industry resources. Each course involves a range of assessment tasks including projects and portfolio development.

Our courses will engage students in real creative industry projects, helping the students to develop essential skills while exploring current industry relevant topics

Our courses are also designed to develop and extend the learner's critical and creative thinking skills, while we help them develop employability skills and an understanding of the world of work.

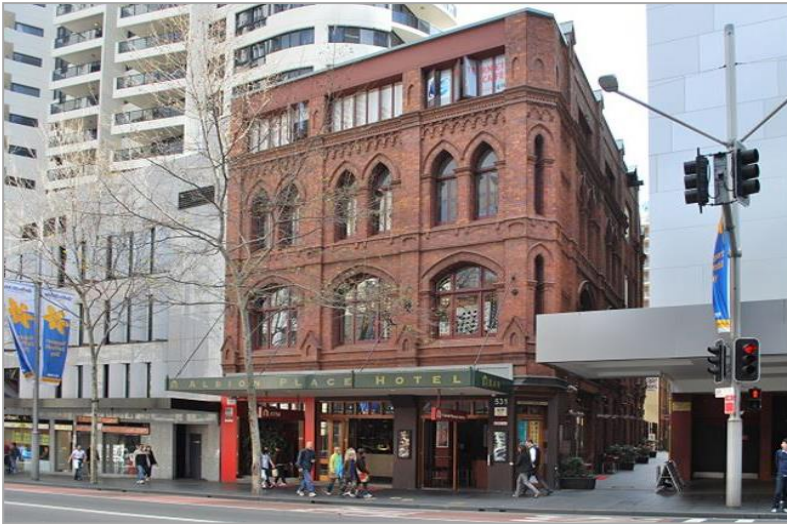
You will be exposed to group dynamics and be required to demonstrate team skills by working on group-based assessments and learning activities. This way you will learn to fulfill team based workplace responsibilities and expectations of the job.

Industry requires employees to multitask more than ever before. For this reason, assessment tasks are designed in such a way as to have the students work in several directions at once.



SCSB CAMPUS LOCATIONS

Located in the heart of Parramatta and City of Sydney, our campuses are places for you to learn, relax and socialise with your classmates.



531 George Street, Sydney

Being just a few minutes' walk from Town Hall train station, our Sydney City campus is easily accessible by train or bus from different parts of Sydney and its suburbs. You can enjoy the diverse and vibrant campus life or take a short stroll to downtown amenities and attractions such as Darling Harbour



1 Fitzwilliam Street, Parramatta

Parramatta is the second largest CBD in Sydney and the sixth largest in the country. Parramatta offers a rich mix of dining, cultural, entertainment, retail and leisure experiences conveniently located adjacent to Parramatta station and Westfield, our Parramatta Campus will provide centralised access for students attending from Western Sydney

Contact us:

Level 3, 531 George Street, SYDNEY NSW 2000

Phone: +61 2 8937 0506

Level 2, 1-3 Fitzwilliam St, PARRAMATTA NSW 2150

Phone: +61 2 9633 3287

www.scsb.nsw.edu.au